



TOP FEATURES

		PhotoPRINT Server-PRO	PhotoPRINT SERVER	PhotoPRINT DX	PhotoPRINT SE
CLIENT	Print Jobs from any Application	✓	✓	✓	✓
	Customizable Network Hotfolders	✓	✓		
JOB CONTROL	Multiple Contour Cut support	✓	✓	✓	
	Nest Contour Cut jobs	✓	✓	Optional	
	Job Estimation	✓	✓		
	Ink Estimation	✓	✓	✓	
	TWAIN (scan directly to queue)	✓	✓	✓	
	Repeat Job	✓	✓	✓	
	Print Wizard	✓	✓	✓	✓
	Job Nesting: Manual & Automatic	✓	✓	Optional	Optional
	Interactive Tiling	✓	✓	✓	Optional
	Presets: Import, Save, Apply & Export	✓	✓	✓	✓
	Edit queued jobs with 3rd party applications	✓	✓	✓	✓
RIP	Adobe® PostScript® 3	✓	✓	✓	✓
	Contour Cut to Hybrid Printer/Cutter	✓	✓	✓	✓
	Contour Cut to Virtual Hybrid Printer/Cutter	✓	✓	✓	
	Simultaneous Output Threads	3	3	2	1
	CMYK & Spot Color Separations	✓	✓	✓	
COLOR MANAGEMENT	ICC Profile Creation	✓	Optional	Optional	Optional
	Utilize 3rd Party ICC Output Profiles	✓	✓	✓	✓
	Object Color Control	✓	✓		
	Global Color Mapping with Pantone® Library	✓	✓	✓	✓
	Custom Color Mapping	✓	✓		
DESIGN	Smooth Shadow	✓		✓	
	Link PDF	✓		✓	
	Vector and Text Creation & Editing	✓		✓	
	Make Transparent all color modes	✓		✓	
	Multiple Contour Cut Creation & Editing	✓		✓	
	Auto Serialization	✓			
	Templates: Apply, Create, & Edit	✓			

PHOTOPRINT 10 FAMILY OF PRODUCTS

PhotoPRINT SERVER-PRO™ A complete client-server RIP solution designed for high-production environments. This powerful and intuitive package includes all of the extended capabilities and cost-savings features needed to run a successful print business. Extended features include an EDITOR application for layout and design, Color Profiler for output profile creation and editing, and an Ink Estimation tool for accurate job costing.

PhotoPRINT SERVER™ This client-server RIP solution is perfect for networks and production environments, featuring workflow tools such as Job Priority, Page Nesting, Job Nesting, and Job Presets. This package will save you time and money, while generating accurate and consistent results across multiple printers.

PhotoPRINT DX™ An unparalleled layout package with design capabilities for text, shapes and effects, combined with the versatility to RIP-and-print to two devices simultaneously. A perfect solution for mid-sized production environments – design, RIP, Contour Cut, and print all within one application.

PhotoPRINT SE™ This is an ideal RIP solution for smaller production environments with a single design station and a single wide-format printer. The simple and logical UI will have first-time users printing in no time, with the freedom to grow to other PhotoPRINT Family packages as their print business grows.

SAi Headquarters
Toll free: 1-800-229-9068
Tel: 1-801-478-1900
Fax: 1-801-401-7234
Email: info@SAintl.biz

SAi Europe
Tel: +32.2.725.5295
Fax: +32.2.725.2809
Email: info@SAintl.eu

PhotoPRINT is a registered trademark of SAi; Adobe and PostScript are registered trademarks of Adobe Systems, Inc.; Pantone and other Pantone, Inc. trademarks are the property of Pantone, Inc.; ColorLogic is a registered trademark of ColorLogic GmbH. All other trademarks are the property of their respective owners. ©2010 SAi. All Rights Reserved.



Printed on 100% recycled material.

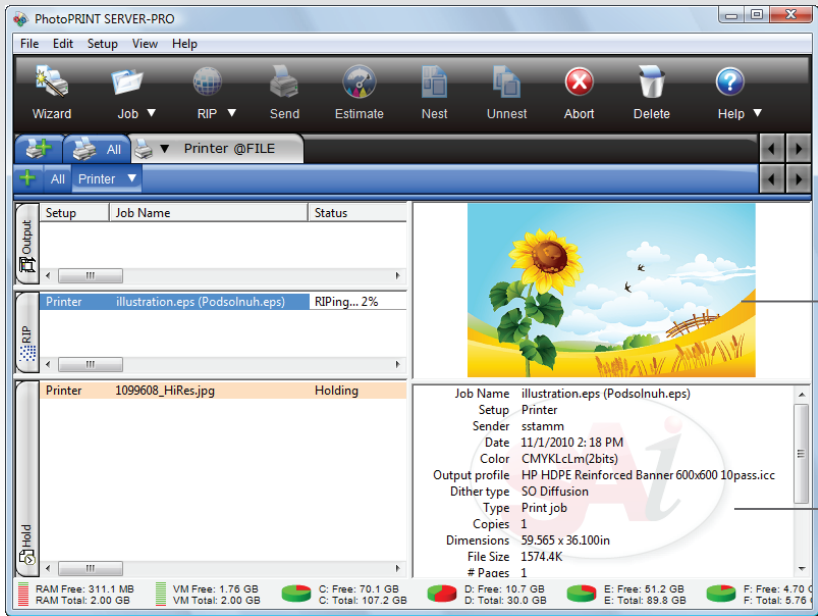
photoPRINT 10

MORE THAN JUST A RIP



PHOTOPRINT FAMILY 10 OFFERS THE INDUSTRY-LEADING PRINT & CUT WORKFLOW

Now made even better! Progressing along with the large format industry, PhotoPRINT is designed to help your productivity ascend to new heights while maintaining SAI's signature ease-of-use interface. **PhotoPRINT 10... More Than Just A RIP!**



Easily view the status of a job in the Output, RIP and Hold queues.

Preview your job quickly

Instantly review important information about your job

NEW FEATURES IN PHOTOPRINT 10



Ink Estimation

Eliminate the guesswork of job costing, with the exciting new Ink Estimation tool in PhotoPRINT 10. Estimate how much ink each print job will use to help calculate the true cost of every print job. Even the most seasoned print shops will find this feature to be an incredibly useful tool. Gain a better understanding of your production and make more informed decisions about upcoming expenses, incoming jobs and daily workflow with the Ink Estimation tool.



Advanced PDF Support

This new Editor feature is sure to save sign shop owners hours of headache! Now you can link Adobe® PDF files to ensure that the intended colors are used from the original file. Add text and objects to the PDF, and even use the Make Transparent Tool and Contour Cut effect. PhotoPRINT applies these changes while keeping the original colors, blends and transparencies intact.



Contour Cut Nesting in PhotoPRINT

Now you can nest 3rd party Contour Cut jobs right in PhotoPRINT! Add your files directly to PhotoPRINT, edit each file as needed, and then nest them all together! This enhanced workflow will save media and boost your productivity.



Add Jobs with Multiple Contour Cut Paths to PhotoPRINT

Take advantage of PhotoPRINT's Multiple Contour Paths feature, even while designing in 3rd party applications! You can create multiple contour cut paths in any design program, but you can add final customization to those paths right in PhotoPRINT! We've eliminated the extra steps to make Contour Cutting even easier.

POWERFUL AND INTUITIVE FEATURES

SO Diffusion

SAI's newest dithering technology eliminates banding and artifacts to produce the smoothest gradients and most vibrant, accurate output of any other diffusion method. Processing speeds are highly competitive.

Print Wizard

PhotoPRINT already has the best workflow in the industry, but now you can use the Print Wizard feature to automate it! Print Wizard uses a basic question and answer approach to guide you through adding a job, choosing a printer, setting basic job parameters and printing. Print Wizard even makes color correction easy when you use the Variations feature.

Multiple Contour Cut Paths

Looking to simplify your Print & Cut workflow? Create multiple contour paths, customize your own contour path style, and assign different colors to each path. You can also adjust different settings for each contour in the Contour tab of the RIP & Print dialog.

Application Direct Printing

Simply looking for a great RIP to print your designs? Search no further! With dynamic PPDs, you can print from any desktop application that has a "Print" button, including design programs and even internet browsers. You can also use this feature with a networked printer to allow several designers to send to one printer.

Nesting

True Job Nesting allows you to nest multiple print jobs within PhotoPRINT. Both features save you time and money, and both are inherent features in PhotoPRINT 10.

Color Profiling

With PhotoPRINT 10 you get consistent control of color and you save yourself time and energy, not to mention wasted paper and ink. Harness the power of the open architecture of PhotoPRINT, which allows you to use many different devices including the X-Rite® i1 spectrophotometer.

Compatibility

From the latest and greatest print drivers PhotoPRINT 10 has your back with tons of drivers to run just about any printer on the planet. In addition, PhotoPRINT 10 has thousands of ICC profiles built in, giving you the best print quality available in the least amount of time. Whether you are running a state of the art sign shop, or simply cutting stickers on an old plotter, PhotoPRINT 10 is the software for you!

Updated computer? PhotoPRINT is now compatible with Windows™ 7 32-bit and 64-bit machines.