

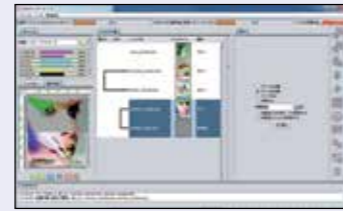
Intuitive and user-friendly operation



1. Easy to follow icons enable intuitive and user-friendly operation



2. Related settings feature in one window to simplify RIP operations with 'Register as Favourite' option available for regularly used layouts



3. Printing progress can be monitored on the main screen

3-layer printing

Enables simultaneous 3-layer printing:
e.g. Colour → White → Colour

Web update function is supported:

This facility enables easy program updates and profile downloading to be performed via the internet.

JV300 Series

Specifications

	JV300-130	JV300-160
Print head	On-demand piezo head (staggered dual-head)	
Resolution	360 dpi, 540 dpi, 720 dpi, 1440 dpi	
Drop size	Min. 4pl, Max.35pl	
Head height	2.0mm/2.5mm/3.0mm (+1.0mm or +2.0mm) * manual adjustment	
Ink type	Eco solvent ink: SS21/BS3/ES3 (to be available separately)	
Ink colour	SS21: 9-colour (CMYKcLmLkOrW), BS3(CMYK), ES3(TBD)	
Ink capacity	SS21:440ml cartridge/2L ink pack (W:220ml cartridge only) BS3:600ml ink pack ES3:440ml cartridge (W:220ml, cartridge only)	
Max. printing width	Max.1,361mm	Max.1,610mm
Max. media width	Max.1,371mm	Max.1,620mm
Media thickness	1.0mm or less	
Roll weight	40kg or less	
Outside dimension	2,541mm(W) x 707mm(D) x 1,392mm(H)	2,793mm(W) x 707mm(D) x 1,392mm(H)
Packing size	2,666mm(W)x750mm(D)x1,050mm(H)	2,916mm(W) x 750mm(D) x 1,050mm(H)
Body weight	170.6kg	182.4kg
Power supply	2x Single phase (AC100-120V/220-240V +/-10%) 50/60Hz±1Hz	
Power consumption	1,440Wx2 or less (100V) / 1,920Wx2 or less (200V)	
Applicable standards	VCCI class A / FCC class A / CE Marking (EMC, Low Voltage and Machinery) / CB report / UL60950-1ETL / RoHS / REACH / CCC (pending) / Energy Star / RCM	
Operational environment	Temperature: 20-30 °C (68-86 °F) Humidity: 35-65% Rh (Non condensing)	

Supplies

Item	Colour			
SS21	Cyan	SPC-0501C	440ml Ink cartridge	
	Magenta	SPC-0501M		
	Yellow	SPC-0501Y		
	Black	SPC-0501K		
	Light Cyan	SPC-0501LC		
	Light Magenta	SPC-0501LM		
	Light Black	SPC-0501Or		
	Orange	SPC-0501Lk		
	White	SPC-0504W-2		220ml Ink cartridge
	Sb53	Cyan		SPC-0588C
Magenta		SPC-0588M		
Yellow		SPC-0588Y		
Black		SPC-0588K		
Light Cyan		SPC-0588LC		
Light Magenta		SPC-0588LM		
Light Black		SPC-0588Or		
Orange		SPC-0588Lk		
Blue		SB53-BL-44	440ml Ink cartridge	
Magenta		SB53-M-44		
Yellow	SB53-Y-44			
Black	SB53-K-44			
Deep Black	SB53-DK-44			
Light Blue	SB53-LBL-44			
Light Magenta	SB53-LM-44			
Blue	SB53-BL-2L	2,000ml Ink pack		
Magenta	SB53-M-2L			
Yellow	SB53-Y-2L			
Black	SB53-K-2L			
Deep Black	SB53-DK-2L			
Light Blue	SB53-LBL-2L			
Light Magenta	SB53-LM-2L			

4 different ink set options available:

4 x Ink Set Options

- C M Y K**
4-colour (high speed printing)
- C M Y K Lc Lm Lk Or**
8-colour (smooth, vibrant colours)
- C M Y K Lc Lm W**
6-colour + White/White (high density white printing)
- B M Y Dk Lb Lm**
6-colour (dye sub printing)

SS21 (for C M Y K Lc Lm Lk Or and C M Y K Lc Lm W)

Sb53 (for B M Y Dk Lb Lm)

JV300 provides even greater versatility and productivity with 4 different ink set options, including solvent and dye sub inks.

• Some of the samples in this folder are artificial renderings • Specifications, design and dimensions stated in this folder may be subject to change without notice (for technical improvements, etc.)
• The corporate and merchandise names written on this folder are the trademark of the respective corporations • Inkjet printers print using extreme fine dots, so colours may vary after replacement of the printing heads, also note that if using multiple printer units, colours could vary slightly from one unit to other unit due to slight individual differences • Composer's errors reserved



Versatile, high-quality production printer...



www.mimakieurope.com info@mimakieurope.com @MimakiEurope

Mimaki Europe B.V. Stammerdijk 7E, 1112 AA Diemen, The Netherlands Tel: +31 (0)20 4627640



SIGN & GRAPHICS



TEXTILE & APPAREL



The world imagines... Mimaki delivers



the power to

create...



Next-generation printer with beautiful output and high productivity

Mimaki's latest high performance JV300 Series sets a new bench mark for professional wide format printers. With the unrivalled versatility of multiple ink types, the JV300 delivers stunning photo-quality prints at class-leading speeds and provides the ultimate wide format solution for sign & graphics professionals, sportswear and fashion manufacturers, print shops and more.

JV300 series delivers ...

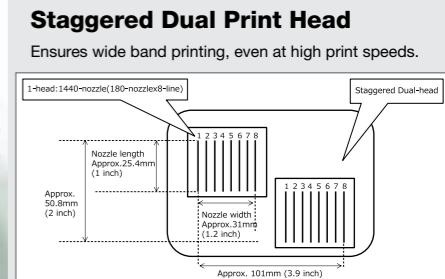
- Fast printing speeds up to 105.9m² per hour
- High quality print resolution of up to 1,440 dpi
- Two different printing widths: 1,361mm and 1,610mm
- Choice of multiple eco-solvent and dye sub ink sets:
 - 9-colour options (SS21) including; Orange, Light Black & White inks
 - Vibrant 6-colour dye sub options (Sb53)
- UISS and optional MBIS III on board 2 litre bulk ink system
- MAPS3 with variable dot and large ink drop providing high quality at high speed
- 3-way intelligent heater

SOLVENT & DYE SUB INKS
2 PRINT WIDTHS AVAILABLE
1,440 DPI MAX RESOLUTION
4/6/7/8 COLOUR MODES
105.9m²/h MAX. SPEED

JV300 Series
JV300-130 / JV300-160



HIGH PRODUCTIVITY

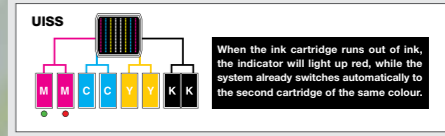


Large ink dot size in high speed mode
 Delivers high density print by removing the gap between dots.



Uninterrupted Ink Supply System (UISS)

Utilises two cartridges per colour in 4-colour mode. When one cartridge runs out of ink the system switches automatically to the second cartridge of the same colour, enabling long unattended printing.



Create ... Signage, Vehicle graphics, PoS, Banners, Posters, Fashion & Sportswear, Promotional, Exhibition graphics, Stickers, Garment marking, Canvas prints and much more...

KEY TECHNICAL FEATURES ...

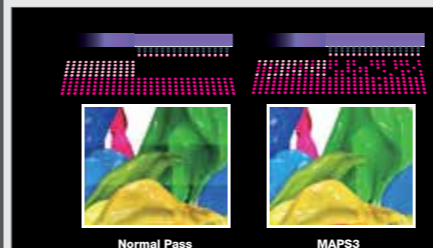
HIGH PRINT SPEEDS

4-colour (C, M, Y, K)	8-colour (C, M, Y, K, L, L, L, L)	6-colour + White (C, M, Y, K, L, L)
PVC Draft 540x720dpi 4Pass Bi Hi 32.7m²/h High Speed 720x1080dpi 6Pass Bi Hi 20.2m²/h Standard 720x1440dpi 12Pass Bi Hi 10.4m²/h High Quality 1440x1440dpi 16Pass Bi Hi 4.3m²/h	PVC Draft 540x360dpi 1Pass Bi Hi 105.9m²/h High Speed 540x720dpi 2Pass Bi Hi 69.2m²/h High Speed 540x720dpi 4Pass Bi Hi 32.7m²/h Standard 720x1080dpi 12Pass Bi Hi 10.5m²/h High Quality 720x1080dpi 24Pass Bi Hi 5.3m²/h	PVC Draft 360x360dpi 2Pass Bi Hi 50.5m²/h High Speed 540x720dpi 14Pass Bi Hi 3.1m²/h Standard 720x1080dpi 18Pass Bi Hi 2.3m²/h High quality 720x1440dpi 32Pass Bi Hi 1.3m²/h
Banner Super Draft 360x360dpi 1Pass Bi Hi 105.9m²/h Draft 540x360dpi 2Pass Bi Hi 69.2m²/h High Speed 540x720dpi 4Pass Bi Hi 32.7m²/h Standard 720x1080dpi 12Pass Bi Hi 10.5m²/h High Quality 720x1080dpi 8Pass Bi Hi 15.4m²/h	Banner Draft 360x360dpi 2Pass Bi Hi 50.5m²/h High Speed 540x720dpi 4Pass Bi Hi 33.9m²/h Standard 540x720dpi 8Pass Bi Hi 17.4m²/h High Quality 720x1080dpi 16Pass Bi Hi 7.9m²/h	2-layer print (colour > white > colour) General transparency 0 1 2 3 4 High Speed 720x1080dpi 14Pass Bi Hi 3.1m²/h Standard 720x1080dpi 18Pass Bi Hi 2.3m²/h High quality 720x1440dpi 32Pass Bi Hi 1.3m²/h
3-layer print (colour > white > colour) General transparency 0 1 2 3 4 High Speed 720x1080dpi 18Pass Bi Hi 2.3m²/h Standard 720x1080dpi 24Pass Bi Hi 1.3m²/h High quality 720x1440dpi 32Pass Bi Hi 0.8m²/h		

BEAUTIFUL OUTPUT

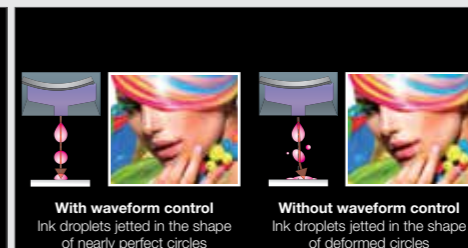
MAPS3 (Mimaki Advanced Pass System 3)

Ensures more even drying of inks by dispersing ink drops between passes.



Waveform Control Technology

Ensures high quality print resolution, by jetting ink drops in straight lines with almost perfect round dots, delivering clear and sharp letters, lines and edges.



Orange & Light Black SS21 Inks

New orange process ink delivers wider gamut to cover 94% of the PANTONE colour chart. Light black gives superior grey balance control and accurate greyscale printing.

